



Blowers And Gas Boosters

These centrifugal blowers and gas boosters are of robust construction and designed to run continuously under full load conditions handling a wide variety of gases or air. The shaft is sealed to isolate the bearings when boosting landfill or biogas. Standard machines have a cast iron bearing housing, with aluminium volute casing and impeller. Alternative materials are available.

Boosters can be supplied as a basic unit with baseplate and motor, or as a package with pressure switches and control panel wired and fitted as shown in the photograph, to comply with IGE/UP/2.

All options are available as duplex sets with one unit on standby, and packaged with approved controls.

Compliant to : IGE / UP / 2

ATEX DIRECTIVE

MACHINERY DIRECTIVE : 2007

BSEN 8487 : 2007

Model 876

Air Blowers:

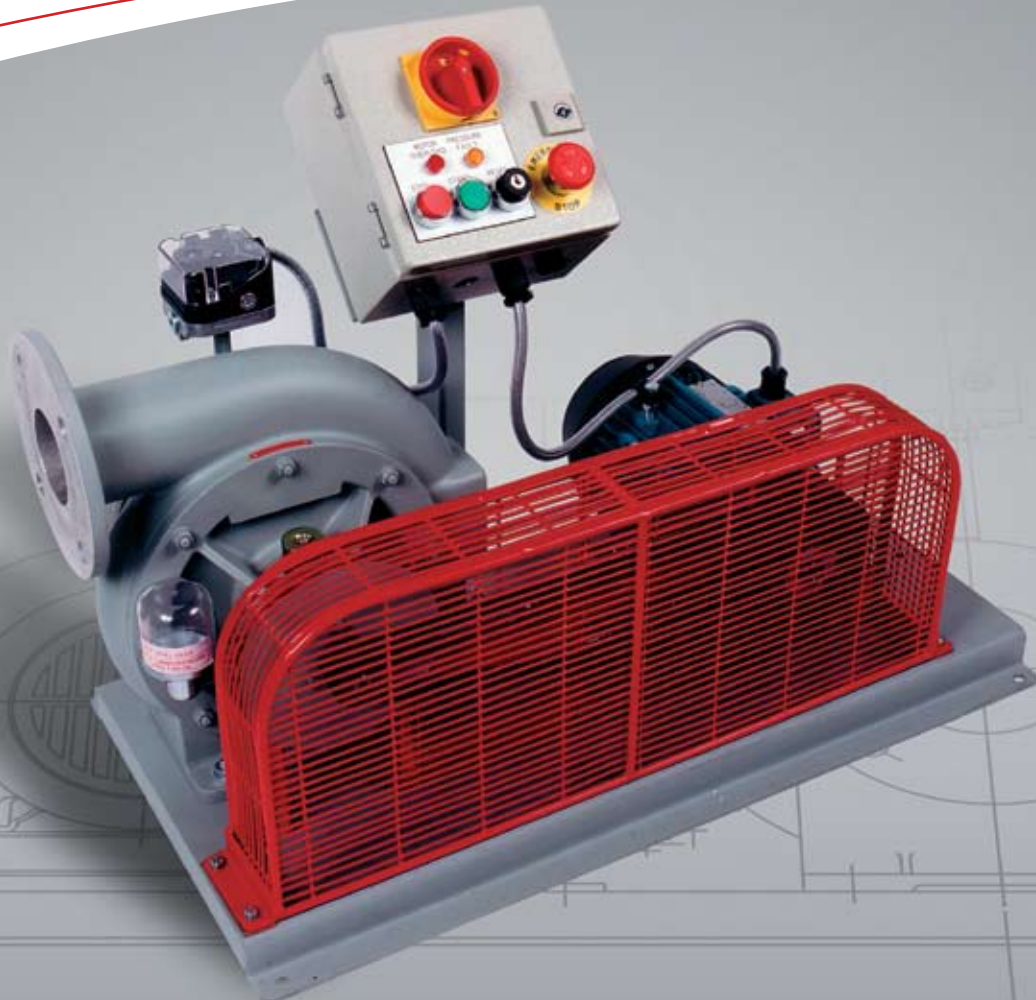
Aeration
Burners

Gas Boosters:

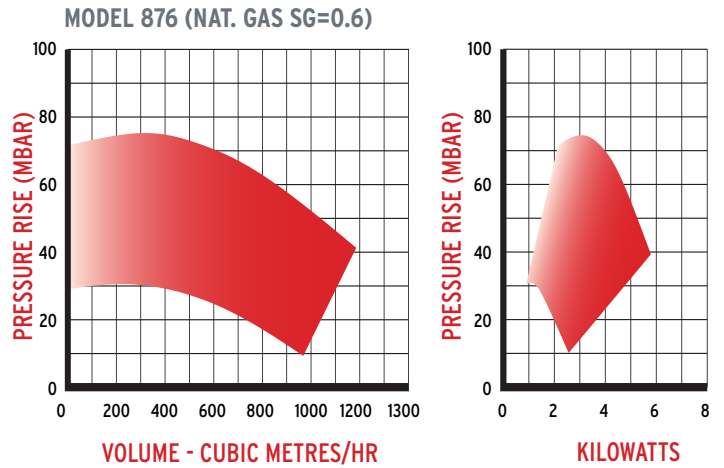
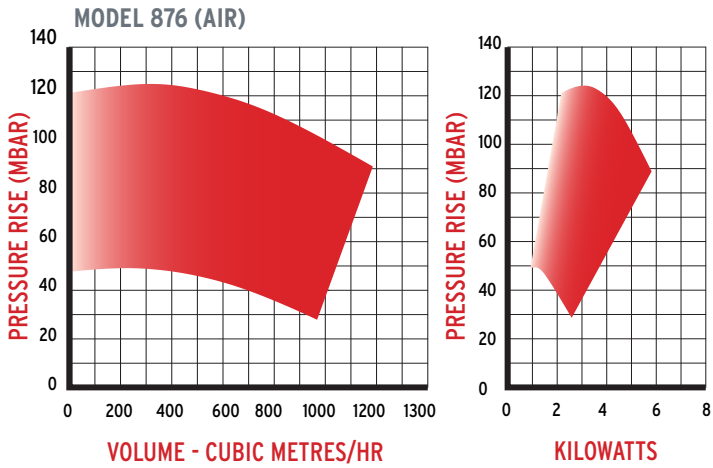
Burners
Gas Engines
Waste Gas Burners

Ancillary Equipment:

- Inlet low pressure switches
- Isolating valves
- Inlet and discharge flexible connectors, inlet non-return valves, discharge check valves
- Acoustic/weatherproof enclosures are available
- Motors and ancillaries available for zoned areas
- Filter silencer for blowers/exhausters
- Starter/control panel

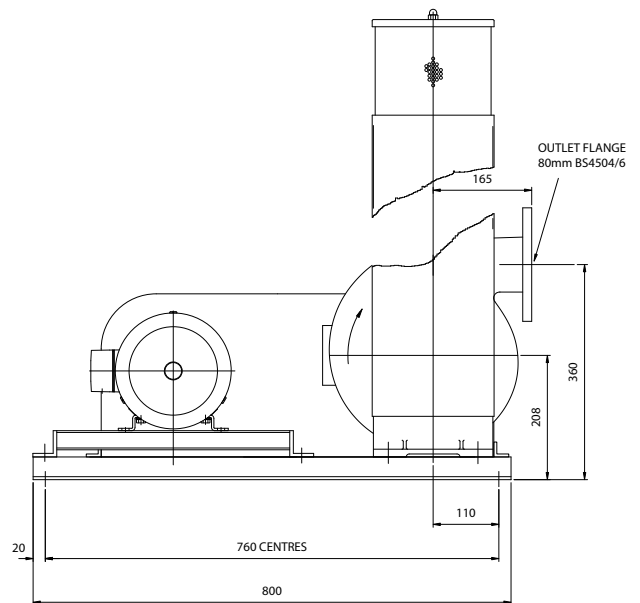
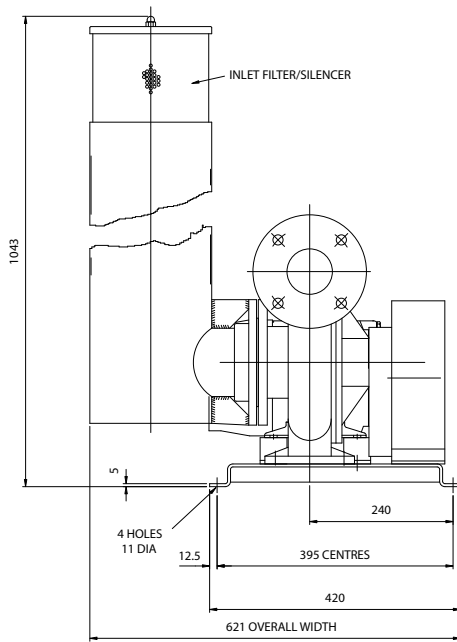


Dimensions & Performances



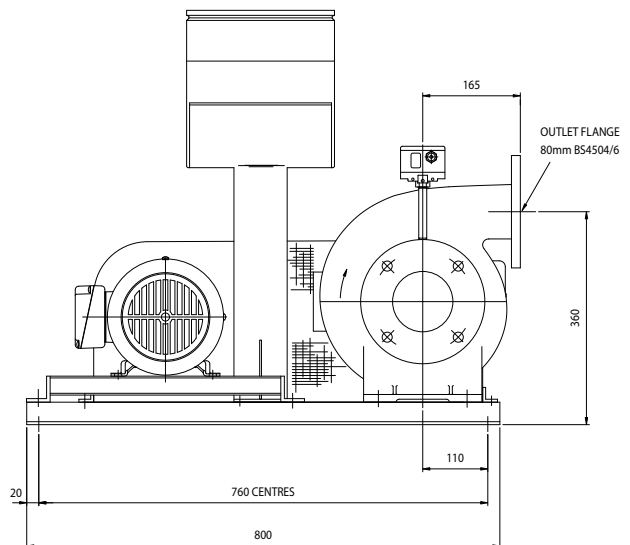
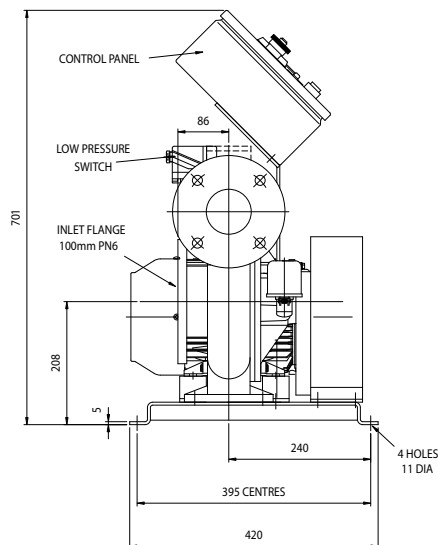
BLOWER SET

kW	Weight (Kgs)
1.10	59.8
1.50	62.8
2.20	64.8
3.00	77.0
4.00	86.0
5.50	99.0
7.50	99.0



GAS BOOSTER SET

kW	Weight (Kgs)
1.10	58.9
1.50	61.9
2.20	63.9
3.00	76.0
4.00	85.0
5.50	98.0
7.50	98.0



Whilst the details contained in this leaflet are representative of the machines, the actual products may differ from the illustrations due to improvements in design. Certified copies and performance curves will be supplied on request.