



Rotary Blowers, Vacuum Pumps & Gas Boosters

The sliding blade design employed in these machines is an efficient and simple method of supplying medium volumes of air and gases at low pressure differentials. The once through lubrication system with isolated bearings makes these ideal for handling aggressive gases including Digester and Landfill.

The cylinder is made from high grade close grained cast iron with deep fins to provide ample cooling surface. Bores are machined to give maximum blade life.

Meehanite rotor and shaft assembly, balanced and accurately slotted.

Sliding blades are made from a non-asbestos hard wearing resin bonded fabric material.

A mechanical oil pump provides a metered supply of oil to cylinder, providing ideal lubrication to wearing parts.

The blade depth can be quickly checked without removal of any parts or pipework.

All machines in this range are aircooled with a fan fitted at the rear end to assist cooling. Overheating of vacuum pumps continuously working at 457 mm Hg (18" Hg) and above is eliminated by the introduction of cool filtered ballast air.

Supplied as direct-coupled or belt driven to give exact output requirements.

L12 - 70

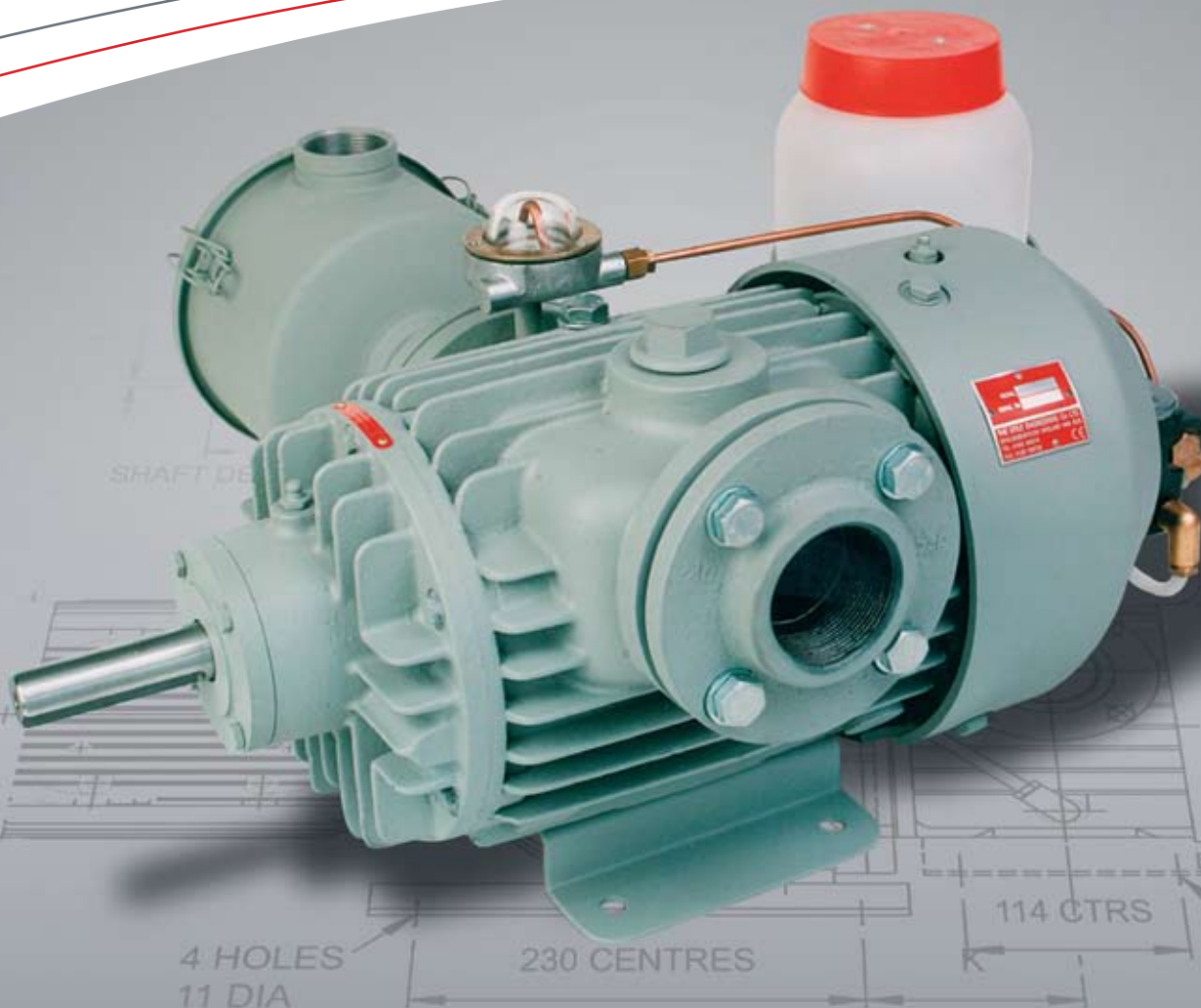
Vacuum Pump:

Vacuum Forming
Vacuum Lifting/Chucking
Dewatering
Vacuum Priming
Liquid Waste Tanker

Air/Gas Compressors:

Digester Gas Mixing
Burners
Aeration

- Simple Installation
- Cool Running
- Low Noise Level
- Vibration-Free Running
- Easy Maintenance
- Pulsation-Free Delivery



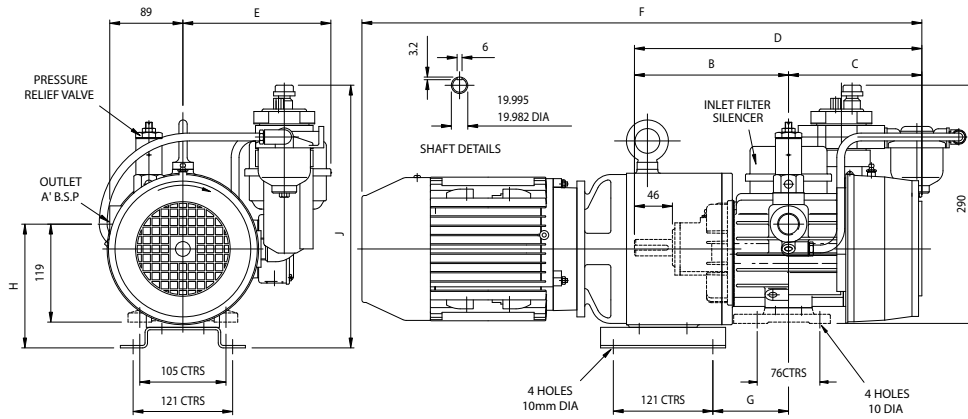
Dimensions & Performances

L12-32 BLOWER - Free Air Delivered And Power

Model	Speed	Dis- placement m ³ /hr	345 mbar		690 mbar		1035 mbar		1380 mbar	
			Air Flow	Power	Air Flow	Power	Air Flow	Power	Air Flow	Power
			m ³ /hr	kW	m ³ /hr	kW	m ³ /hr	kW	m ³ /hr	kW
L12	1440	20.4	16.1	0.50	14.8	0.70	13.4	0.85	12.1	1.00
	1600	22.6	18.0	0.55	16.5	0.80	14.9	0.95	13.4	1.15
	1700	24.1	19.0	0.60	17.5	0.85	15.8	1.00	14.3	1.20
L18	1440	30.6	24.3	0.80	22.2	1.10	20.2	1.40	18.2	1.70
	1600	34.0	27.0	0.85	24.8	1.20	22.4	1.55	20.2	1.85
	1700	36.0	28.7	0.90	26.3	1.30	23.8	1.65	21.4	2.00
L26	1440	44.2	35.1	1.00	32.1	1.40	29.2	1.85	26.1	2.25
	1600	49.1	39.1	1.10	35.7	1.55	32.4	2.05	29.0	2.50
	1700	52.1	41.4	1.20	37.9	1.70	34.5	2.15	30.9	2.65
L32	1440	54.3	43.5	1.20	40.2	1.70	37.0	2.25	33.8	2.75
	1600	60.3	48.2	1.30	44.7	1.90	41.1	2.50	37.5	3.05
	1700	64.2	51.3	1.40	47.5	2.05	43.6	2.65	39.9	3.25

BARESHAFT BLOWERS						
Model	A	B	C	D	E	Kgs
L12	1/2"	165	153	318	180	16
L18	3/4"	187	175	362	180	21
L26	1"	218	204	422	186	26
L32	1"	210	196	406	186	24

MOTORISED BLOWERS									
Model	kW	A	C	E	F	G	H	J	Kgs
L12	.75	1/2"	153	180	664	67	151	322	42
	639				48				
L18	1.5	3/4"	175	180	708	90	151	322	46
	2.2				683				51
L26	1.1	1"	204	186	770	120	151	322	52
	1.5				770				57
	2.2				874				68
	3.0				809				68
L32	2.2	1"	196	186	858	130	149	320	67
	3.0				793				67
	4.0				858				67
	5.5				793				67

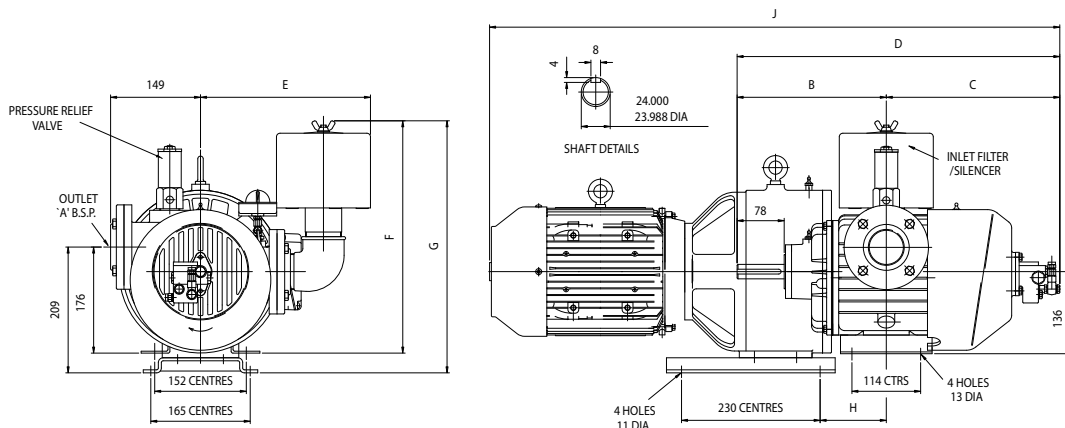


L38-70 BLOWER - Free Air Delivered And Power

Model	Speed	Dis- placement m ³ /hr	345 mbar		690 mbar		1035 mbar		1380 mbar	
			Air Flow	Power	Air Flow	Power	Air Flow	Power	Air Flow	Power
			m ³ /hr	kW	m ³ /hr	kW	m ³ /hr	kW	m ³ /hr	kW
L38	960	64.5	51.6	0.80	48.4	1.30	45.2	1.80	41.9	2.30
	1100	73.9	59.1	0.95	55.5	1.50	51.8	2.05	48.1	2.60
	1300	87.4	70.0	1.10	65.5	1.75	61.1	2.40	56.7	3.10
L51	960	86.6	73.5	1.30	68.9	1.95	64.4	2.60	59.6	3.25
	1100	99.2	84.2	1.50	79.0	2.25	73.7	3.00	68.3	3.70
	1300	117.3	99.5	1.75	93.4	2.65	87.1	3.55	80.7	4.40
L70	960	118.9	103.2	2.00	96.6	2.85	90.0	3.75	83.7	4.60
	1100	136.2	118.4	2.30	110.7	3.30	103.1	4.25	95.9	5.25
	1300	161.0	139.7	2.70	130.7	3.90	121.9	5.05	113.4	6.20

BARESHAFT BLOWERS							
Model	A	B	C	D	E	F	KGS
L38	1.5"	225	273	498	275	340	45
L51	2"	248	294	542	275	340	52
L70	2"	279	327	606	288	383	62

MOTORISED BLOWERS										
Model	kW	A	C	E	G	H	J	Kgs		
L38	.75	1.5"	273	275	373	90			856	87
	1.1								881	93
	1.5								883	95
	2.2								889	106
L51	1.1	2"	294	275	373	113			926	100
	1.5								928	102
	2.2								934	115
	3.0								995	136
L70	2.2	2"	327	288	416	144			998	124
	3.0								1058	146
	4.0								1058	176
	5.5								1058	184



Whilst the details contained in this leaflet are representative of the machines, the actual products may differ from the illustrations due to improvements in design. Certified copies and performance curves will be supplied on request.

The Utile Engineering Co. Ltd. Irthlingborough, Northamptonshire. NN9 5UG. England
Tel: +44 (0)1933 650216 Fax: +44 (0)1933 652738 E-mail: sales@utileengineering.com

www.utileengineering.com